

# IBM ROBOTIC PROCESS AUTOMATION (RPA)

"Task" Automation

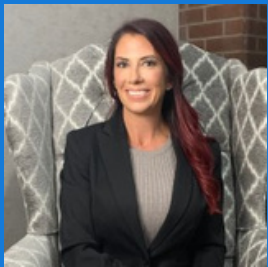
Salient  
Process  
Your process. Our passion.

## ABOUT IBM RPA

IBM RPA offers an opportunity to enter the realm of automated digital labor and the digital workforce. Salient will provide you with comprehensive guidance on automation, going beyond just Robotic Process Automation bots to establish a repeatable, scalable, sustainable, and intelligent program.

## TESTIMONIAL

“It’s been a huge relief for me with all these data-hungry coworkers and operations that we have a solution. We can get you what you need and want ... and Automate Everything! The less busywork that you can do, the better off everyone is, and the happier you’ll be. The more effective you’ll be at your job when you don’t have to waste time doing something that can be automated.”



**PRIMANTI  
BROS.**

[Read Case Study](#)

**Caitlin Stritmatter**  
Director of FP&A at Primanti Bros.

## UNIQUE FEATURES



### COGNITIVE CAPABILITIES

- IBM RPA incorporates cognitive technologies such as natural language processing and machine learning, enabling it to understand and interpret unstructured data. This allows the software to handle complex tasks that involve decision-making and judgment.



### INTEGRATION CAPABILITIES

- IBM RPA integrates with existing systems and applications, including legacy systems, ERPs, CRMs, etc. This enables organizations to automate end-to-end processes across different platforms, maximizing efficiency and reducing manual interventions.



### SCALABILITY AND FLEXIBILITY

- IBM RPA provides a scalable and flexible platform that can accommodate the automation needs of small to large enterprises. It allows for the easy deployment of multiple robots to handle high-volume tasks and supports dynamic workload distribution.



### ANALYTICS AND REPORTING

- The platform offers robust analytics and reporting capabilities, providing insights into automation performance, process efficiency, and productivity. These insights help organizations identify areas for improvement, optimize processes, and make data-driven decisions.



### SECURITY AND COMPLIANCE

- IBM RPA prioritizes data security and compliance with industry regulations. It includes access controls, data encryption, audit trails, and user authentication, ensuring that sensitive information is protected throughout the automation process.

## ADVANTAGES OF IBM RPA

### 1 INCREASED PRODUCTIVITY

Task automation increases productivity because bots complete repetitive tasks faster than human workers. They can also work 24/7.

### 2 ELIMINATES ERRORS

RPA reduces the chance of errors by removing the human factor.

### 3 HIGH EMPLOYEE SATISFACTION

With RPA completing menial tasks, your workers can focus on objectives that need creativity, subjective judgment, and problem-solving, making them feel more satisfied with their work.

To Learn More about IBM RPA, Watch this Video



## WHY SALIENT?

Salient Process is an award-winning company with an IBM Premier Partner distinguishment. We have vast experience with RPA and can help you automate nearly any aspect of your business, whether you want to simplify a standalone process or many day-to-day tasks. We are passionate about helping your business achieve optimization and growth through automation solutions.

You can scan here to book a consultation with Salient's Automation Advisors today.

